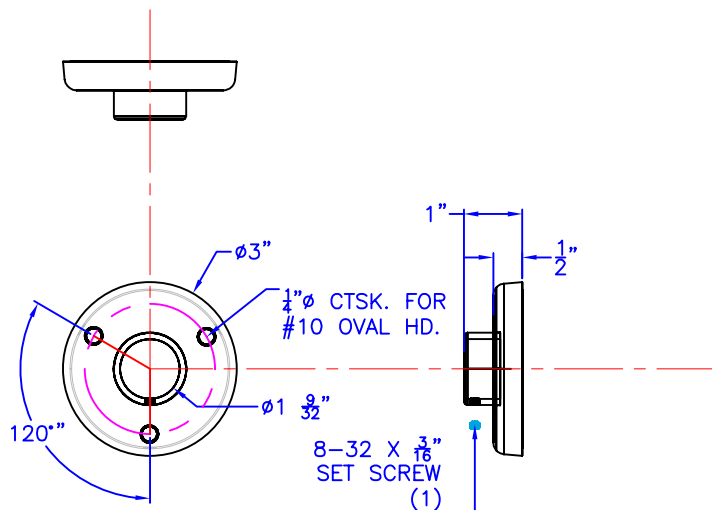
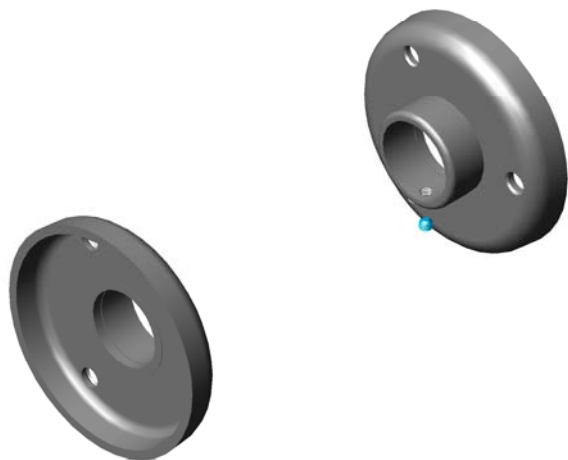




Technical Data

S-4642-XX

1 1/4" WELDED EXPOSED MOUNT SHOWER ROD FLANGE (PAIR)



FINISHES:
-SS SATIN STAINLESS
-BS BRIGHT STAINLESS
-(PC) POWDER COAT - SPECIFY COLOR

Construction:

FLANGE: 11 GAUGE X 3" DIAMETER TYP 304 STAINLESS STEEL WITH (3) 1/4" MOUNTING HOLES CTSK. FOR #10 OVAL HEAD SCREW.

COLLAR: 1 1/2" X .109WALL TYPE 304 STAINLESS STEEL FULLY WELDED TO FLANGE ONE WITH AN 8-32 SET SCREW TO SECURE SHOWER ROD

Operation:

MONTS TO WALL AND HOLDS A 1 1/4" DIAMETER SHOWER ROD

Installation:

USE FLANGE TO MARK DESIRED LOCATION.
DRILL HOLES AND SET ANCHORS.
SECURE ONE OF THE FLANGES TO THE WALL WITH SCREWS(3).
SLIDE SHOWER ROD INTO FIXED FLANGE, SLIDE OTHER FLANGE ONTO SHOWER ROD AND REPEAT STEP TO FASTEN TO WALL, USE SET SCREW TO SECURE ROD TO FLANGE

CAUTION: FLANGES ARE ONLY AS STRONG AS THE ANCHORING DEVICES AND THE WALL ON WHICH IT IS MOUNTED TO.

Guide Specification:

FLANGES ARE FABRICATED OF 304 STAINLESS STEEL WITH EXPOSED MOUNTING. PART INCLUDES ONE PAIR OF FLANGES, ONE WITH OUT AND ONE WITH SHOWER ROD SET SCREW.
WALL FASTENERS ARE NOT INCLUDED.
SHOWER ROD ALSO NOT INCLUDED.