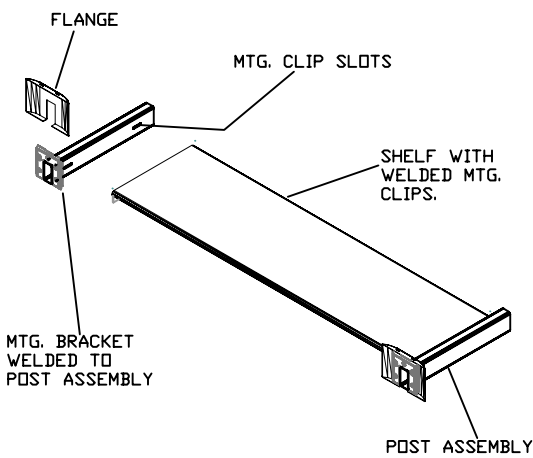
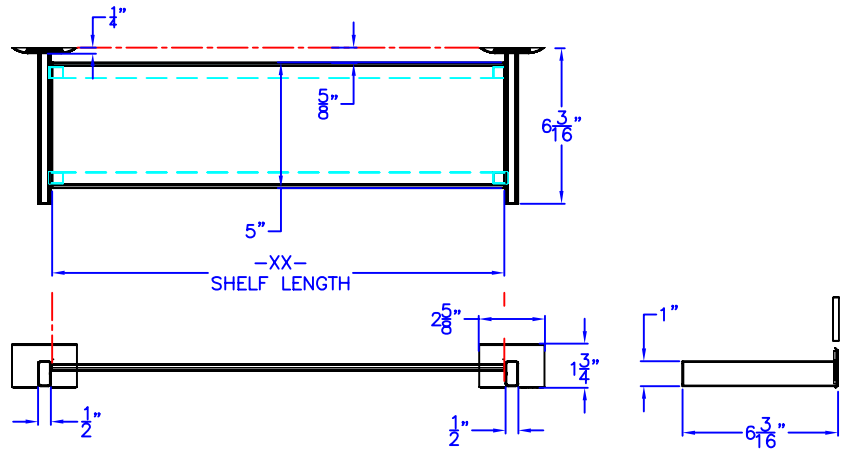
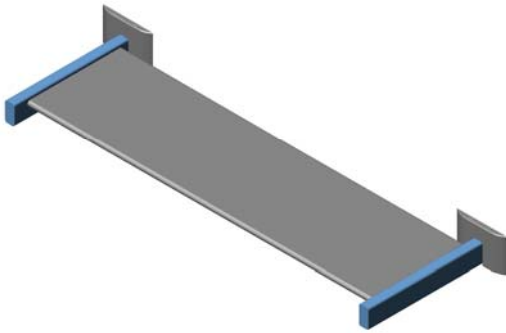




Technical Data S-4573-XX-XX

UTILITY SHELF



PART # SHELF LENGTH FINISH
S-4573 -XX- XX

STANDARD SHELF LENGTHS -XX-
-18-XX (18")
-24-XX (24")
-30-XX (30")

CUSTOM LENGTHS AVAILABLE

FINISHES:
-SS SATIN STAINLESS
-BS BRIGHT STAINLESS (POSTS ASSEMBLY ONLY)
-PC POWDER COAT (SPECIFY COLOR)

Construction:

POST ASSEMBLY: 22 GAUGE TYPE 304 STAINLESS STEEL
MOUNTING BRACKET: 19 GAUGE TYPE 304 STAINLESS STEEL WITH (3) $\frac{3}{16}$ " ϕ AND (2) $\frac{3}{16}$ " X $\frac{9}{32}$ " SLOTTED HOLES.
SHELF: 22 GAUGE TYPE 304 STAINLESS STEEL WITH SPOT WELDED MTG. CLIPS
MOUNTING SCREWS: #8 X 1 $\frac{1}{4}$ " PHIL. PAN HD. ZINC PLATE
FINISHES AS NOTED.

Installation:

USE MOUNTING BRACKET (WELDED TO POST ASSEMBLY) TO MARK AND LOCATE HOLES.
FASTEN ONE POST TO THE WALL.
SET DISTANCE FOR OTHER POST.
ENGAGE MTG. CLIPS ON SHELF INTO SLOTS IN BOTH POSTS AND FASTEN OTHER POST TO WALL.
SLIDE FLANGES ONTO POST ASSEMBLY AND SNAP ONTO MTG. BRACKET.

CAUTION: UNIT IS ONLY AS STRONG AS THE ANCHORING DEVICES AND THE WALL ON WHICH IT IS MOUNTED TO.

Guide Specification:

5" WIDE X 6 $\frac{3}{16}$ " PROJECTION UTILITY SHELF WITH POSTS
CONCEALED MOUNTING SYSTEM.
FABRICATED FROM TYPE 304 STAINLESS STEEL.
SHELF LENGTH AND FINISHES AS NOTED

The manufacturer reserves the right to make changes in design and material without formal notice and without incurring obligation

© Copyright 2005
Brey-Krause Manufacturing

Brey-Krause Manufacturing
1209 West Lehigh Street, Bethlehem, PA 18018
Phone: 610.867.1401 Fax: 610.866.1433
www.breykrause.com