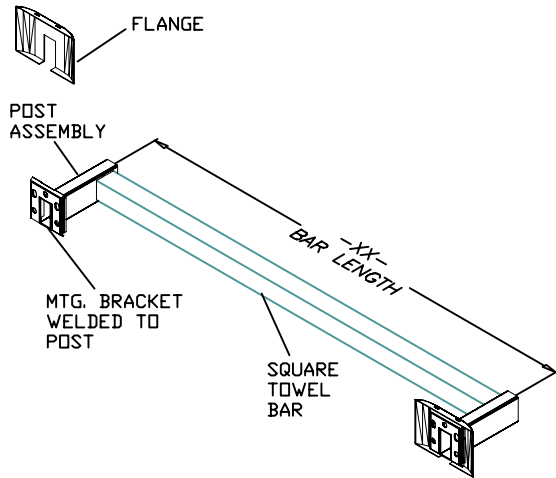
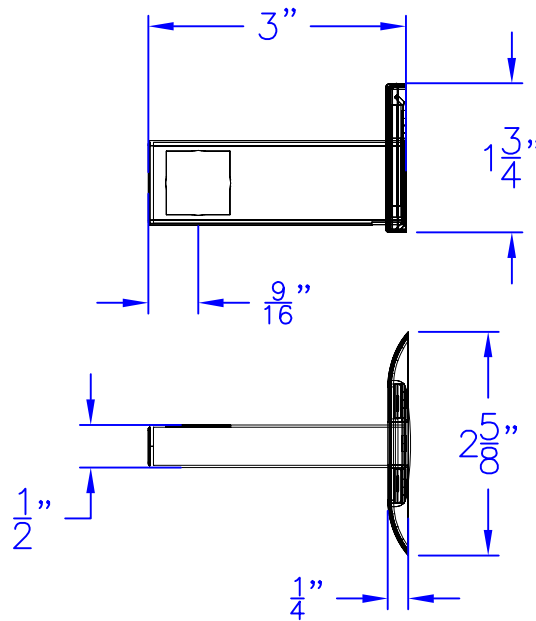
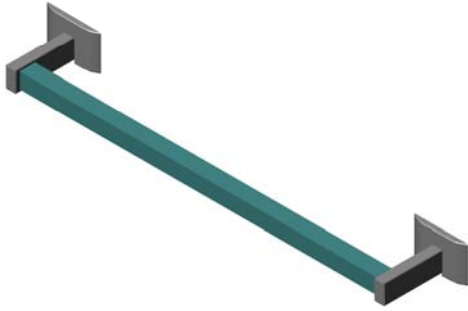




# Technical Data

## S-4543-XX-XX

### SQUARE TOWEL BAR



S-4543-XX-XX

BAR LENGTH FINISH

- FINISHES:
- SS SATIN STAINLESS
  - BS BRIGHT STAINLESS
  - PC POWDER COAT (SPECIFY COLOR)

### Construction:

POST ASSEMBLY: 22 GAUGE TYPE 304 STAINLESS STEEL  
 MOUNTING BRACKET: 19 GAUGE TYPE 304 STAINLESS STEEL WITH (3) 3/16" Ø AND (2) 3/16" X 9/32" SLOTTED HOLES.  
 TOWEL BAR: 3/4" SQUARE X .012 WALL STAINLESS STEEL (-XX- = SPECIFY LENGTH)  
 MOUNTING SCREWS: #8 X 1 1/4" PHIL. PAN HD. ZINC PLATE  
 FINISHES AS NOTED.

### Installation:

USE MOUNTING BRACKET (WELDED TO POST ASSEMBLY) TO MARK AND LOCATE HOLES.  
 FASTEN ONE POST TO WALL.  
 SET DISTANCE WITH TOWEL BAR AND REPEAT STEP FOR OTHER POST.  
 ( INSERT TOWEL BAR INTO BOTH POSTS WHEN FASTENING SECOND POST )  
 SLIDE FLANGE ONTO POST ASSEMBLY AND SNAP ONTO MTG. BRACKET.

CAUTION: UNIT IS ONLY AS STRONG AS THE ANCHORING DEVICES AND THE WALL ON WHICH IT IS MOUNTED TO.

### Guide Specification:

3/4" SQUARE TOWEL BAR ( LENGTH AND FINISH AS INDICATED )  
 CONCEALED MOUNTING SYSTEM.  
 FABRICATED FROM TYPE 304 STAINLESS STEEL.