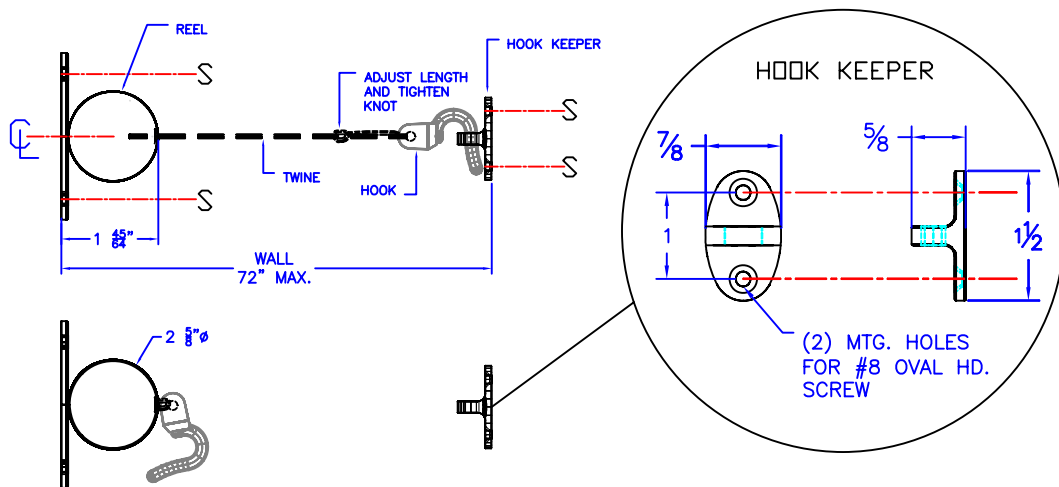
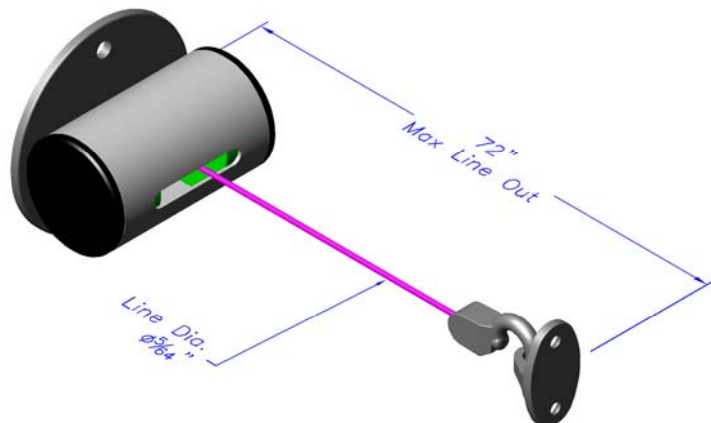
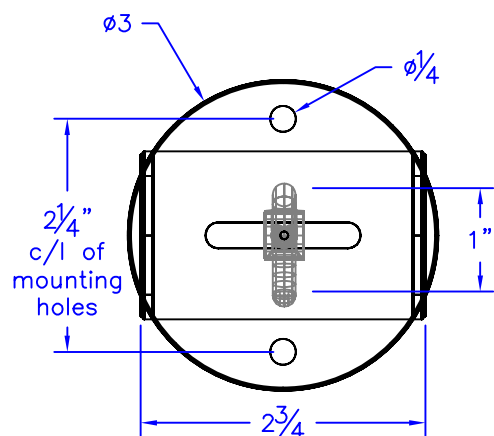




Technical Data

S-5030-XX

RETRACTABLE CLOTHESLINE REEL



Part Number: S-5030-XX **Length:** 72" MAX. OPENING

Finishes: SPECIFIED AS LAST (2) DIGITS (XX) OF THE PART NUMBER.

-SS = SATIN STAINLESS

-PC = POWDER COATED (SPECIFY COLOR)

Construction:

REEL TUBE: 18 GAUGE, 304 STAINLESS STEEL TUBE, $\varnothing 1 \frac{5}{8}$ " x 0.049 WALL.

MOUNTING FLANGE: 14 GAUGE, 304 STAINLESS STEEL.

LINE SPOOL AND CAPS: BLACK HDPE

LINE: $\varnothing \frac{5}{64}$ BRAIDED NYLON SEINE TWINE

HOOK & KEEPER: ANODIZED CAST ALUMINUM

Operation:

MOUNTS IN SHOWER OR TUB AREA TO PROVIDE A LINE TO HANG CLOTHES. MANUAL EXTENSION TO HOOK, POWER SPRING REWIND.

Installation:

MOUNT REEL TO ONE WALL, MOUNT HOOK KEEPER TO OPPOSITE WALL, EXTEND LINE FULLY AND ADJUST LINE LENGTH AT HOOK SO LINE IS FULLY EXTENDED.