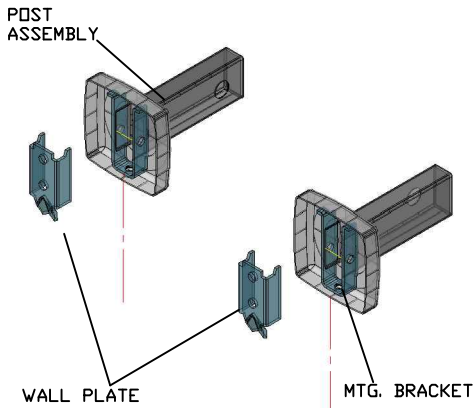
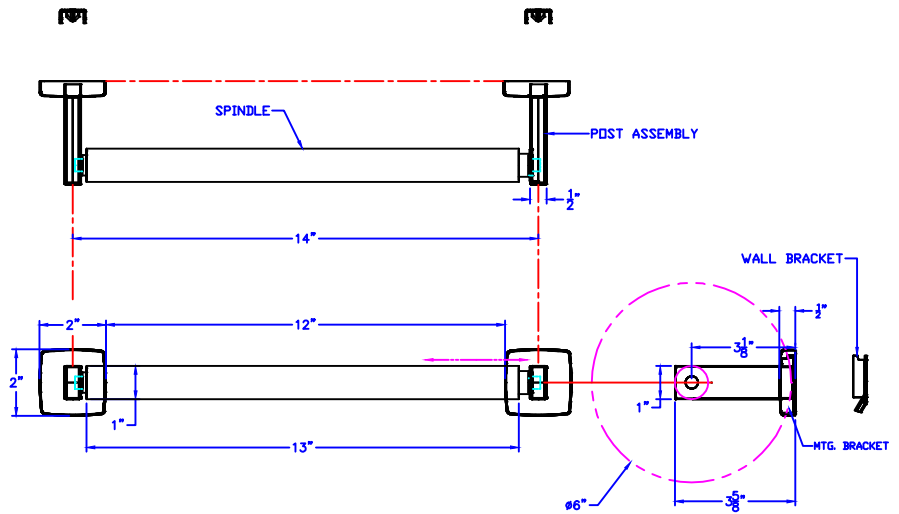
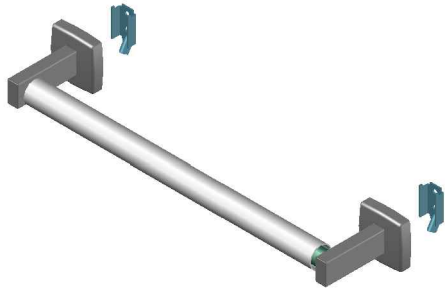




# Technical Data S-4955-XX

## PAPER TOWEL HOLDER



FINISHES: -XX  
 -SS SATIN STAINLESS  
 -BS BRIGHT STAINLESS  
 -PC POWDER COAT (SPECIFY COLOR)

### Construction:

POST ASSEMBLY: 22 GAUGE TYPE 304 STAINLESS STEEL  
 WALL PLATE: 16 GAUGE TYPE 304 STAINLESS STEEL  
 MOUNTING BRACKET: 16 GAUGE TYPE 304 STAINLESS STEEL  
 SPINDLE: 1"Ø STAINLESS STEEL, SPRING LOADED  
 SET SCREW: 8-32 X  $\frac{5}{16}$ "  
 MOUNTING SCREWS: #8 X 1  $\frac{1}{4}$ " PHIL. PAN HD. ZINC PLATE  
 FINISHES AS NOTED.

### Installation:

FASTEN WALL PLATE.  
 TILT POST ASSEMBLY UP SLIGHTLY AND ENGAGE OVER WALL PLATE AND PUSH DOWN TO LEVEL.  
 (SET SCREW HOLE AND POST SEAM ARE TOWARDS FLOOR OR DOWN)  
 THREAD SET SCREW THROUGH POST FLANGE AND MOUNTING BRACKET UNTIL TIGHT.  
 SET DISTANCE WITH SPINDLE AND REPEAT FOR OTHER POST, ALLOW FOR SPINDLE TO BE REMOVED.  
 INSERT SPINDLE INTO POST HOLES.

CAUTION: UNIT IS ONLY AS STRONG AS THE ANCHORING DEVICES AND THE WALL ON WHICH IT IS MOUNTED TO.

### Guide Specification:

PAPER TOWEL HOLDER, UP TO 6"Ø.  
 CONCEALED MOUNTING SYSTEM.  
 FABRICATED FROM TYPE 304 STAINLESS STEEL.  
 1" Ø STAINLESS STEEL SPRING LOADED SPINDLE.

The manufacturer reserves the right to make changes in design and material without formal notice and without incurring obligation

© Copyright 2005  
 Brey-Krause Manufacturing

Brey-Krause Manufacturing  
 1209 West Lehigh Street, Bethlehem, PA 18018  
 Phone: 610.867.1401 Fax: 610.866.1433  
 www.breykrause.com