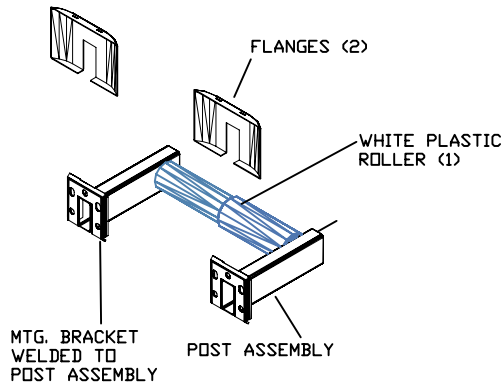
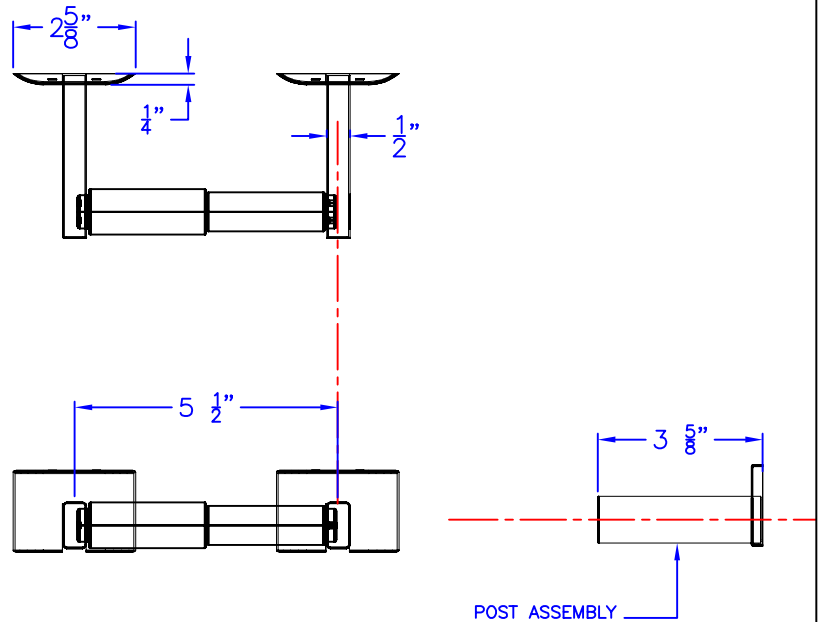
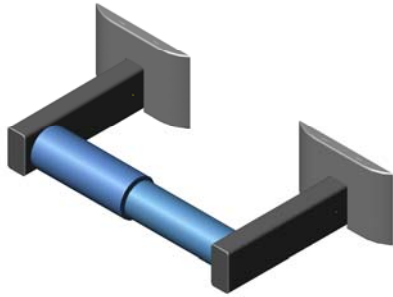




# Technical Data

## S-4553-XX

### SINGLE TOILET PAPER HOLDER



FINISHES:  
 -SS SATIN STAINLESS  
 -BS BRIGHT STAINLESS  
 -PC POWDER COAT (SPECIFY COLOR)

### Construction:

POST ASSEMBLY: 22 GAUGE TYPE 304 STAINLESS STEEL  
 MOUNTING BRACKET: 19 GAUGE TYPE 304 STAINLESS STEEL WITH (3)  $\frac{3}{16}$ "  $\phi$  AND (2)  $\frac{3}{16}$ " X  $\frac{9}{32}$ " SLOTTED HOLES.  
 ROLLER:  $\frac{3}{4}$ "  $\phi$  WHITE PLASTIC SPRING LOADED  
 MOUNTING SCREWS: #8 X  $1\frac{1}{4}$ " PHIL. PAN HD. ZINC PLATE  
 FINISHES AS NOTED.

### Installation:

USE MOUNTING BRACKET (WELDED TO POST ASSEMBLY) TO MARK AND LOCATE HOLES. FASTEN ONE POST TO WALL. SET DISTANCE WITH ROLLER AND REPEAT FOR OTHER POST. SLIDE FLANGES ONTO POST ASSEMBLIES AND SNAP ONTO MTG. BRACKET. INSERT SPRING LOADED ROLLER.

CAUTION: UNIT IS ONLY AS STRONG AS THE ANCHORING DEVICES AND THE WALL ON WHICH IT IS MOUNTED TO.

### Guide Specification:

SINGLE TOILET PAPER HOLDER.  
 CONCEALED MOUNTING SYSTEM.  
 FABRICATED FROM TYPE 304 STAINLESS STEEL.  
 $\frac{3}{4}$ "  $\phi$  WHITE PLASTIC SPRING LOADED PLASTIC ROLLER.

The manufacturer reserves the right to make changes in design and material without formal notice and without incurring obligation

© Copyright 2005  
 Brey-Krause Manufacturing

Brey-Krause Manufacturing  
 1209 West Lehigh Street, Bethlehem, PA 18018  
 Phone: 610.867.1401 Fax: 610.866.1433  
 www.breykrause.com