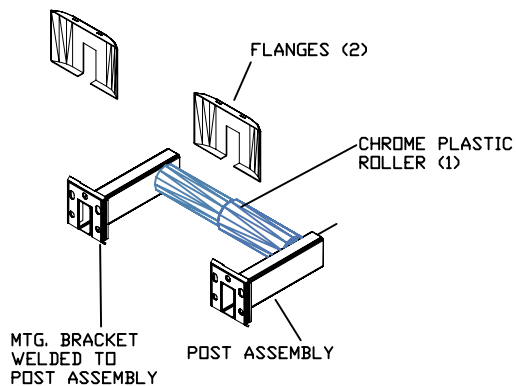
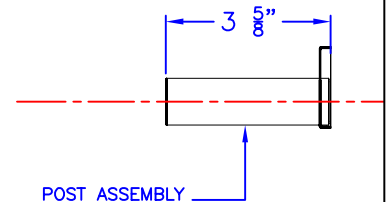
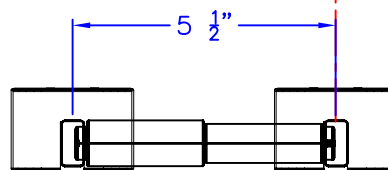
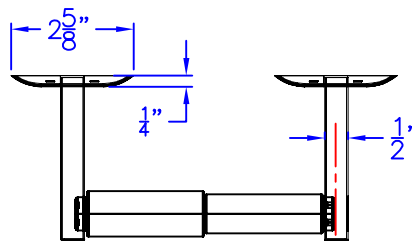
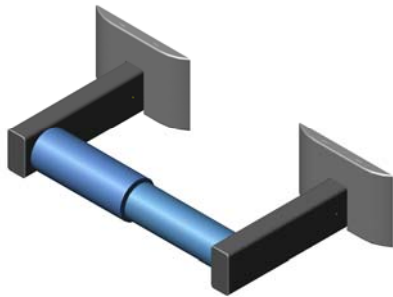




Technical Data

S-4550-XX

SINGLE TOILET PAPER HOLDER



FINISHES:
 -SS SATIN STAINLESS
 -BS BRIGHT STAINLESS
 -PC POWDER COAT (SPECIFY COLOR)

Construction:

POST ASSEMBLY: 22 GAUGE TYPE 304 STAINLESS STEEL
 MOUNTING BRACKET: 19 GAUGE TYPE 304 STAINLESS STEEL WITH (3) $\frac{3}{16}$ " \varnothing AND (2) $\frac{3}{16}$ " X $\frac{9}{32}$ " SLOTTED HOLES.
 ROLLER: $\frac{3}{4}$ " \varnothing CHROME PLASTIC SPRING LOADED
 MOUNTING SCREWS: #8 X 1 $\frac{1}{4}$ " PHIL. PAN HD. ZINC PLATE
 FINISHES AS NOTED.

Installation:

USE MOUNTING BRACKET (WELDED TO POST ASSEMBLY) TO MARK AND LOCATE HOLES.
 FASTEN ONE POST TO WALL. SET DISTANCE WITH ROLLER AND REPEAT FOR OTHER POST.
 SLIDE FLANGES ONTO POST ASSEMBLIES AND SNAP ONTO MTG. BRACKET.
 INSERT SPRING LOADED ROLLER.

CAUTION: UNIT IS ONLY AS STRONG AS THE ANCHORING DEVICES AND THE WALL ON WHICH IT IS MOUNTED TO.

Guide Specification:

SINGLE TOILET PAPER HOLDER.
 CONCEALED MOUNTING SYSTEM.
 FABRICATED FROM TYPE 304 STAINLESS STEEL.
 $\frac{3}{4}$ " \varnothing CHROME PLASTIC SPRING LOADED ROLLER.