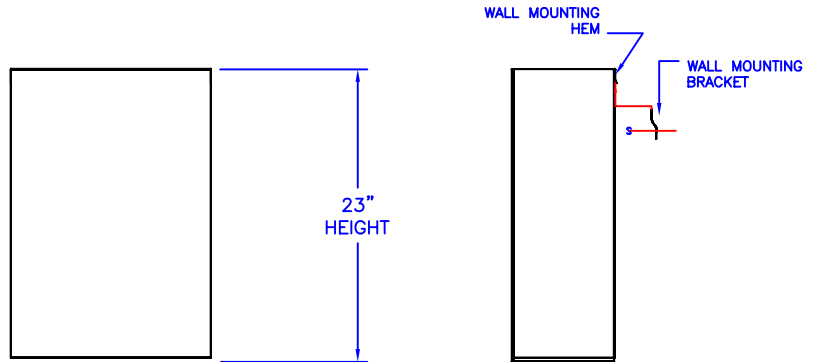
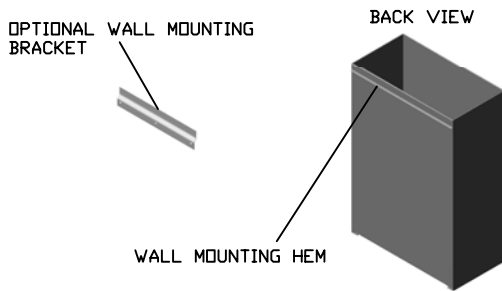
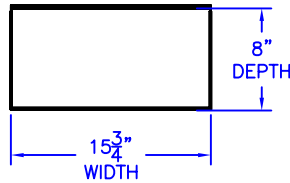
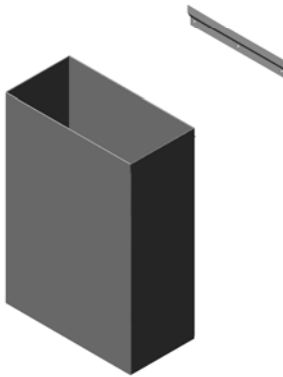




Technical Data C-1020-SS

12 GALLON WASTE CAN



Construction:

22 GAUGE TYPE 304 STAINLESS STEEL.
TOP EDGE IS HEMMED FOR SAFETY.
SATIN #4 FINISH
12 GALLON CAPACITY
OPTIONAL WALL BRACKET IS 22 GAUGE GALVANIZED STEEL WITH (3) $\frac{7}{32}$ " HOLES

Installation:

FLOOR MOUNT OR WALL MOUNT.
WALL MOUNT: USE WALL BRACKET AS TEMPLATE TO LOCATE DESIRED HEIGHT.
FASTEN WALL BRACKET TO WALL.
SLIDE BACK OF WASTE CAN'S HEM DOWN ONTO THE MOUNTED WALL BRACKET.
SLIDE UP TO REMOVE.
FLOOR MOUNTING- WALL BRACKET IS NOT USED.

Guide Specification:

15 $\frac{3}{4}$ " WIDTH X 23" HEIGHT X 8" DEPTH.
12 GALLON CAPACITY WASTE CAN.
22 GAUGE TYPE 304 STAINLESS STEEL.
OPTIONAL WALL HANGING WALL BRACKET.