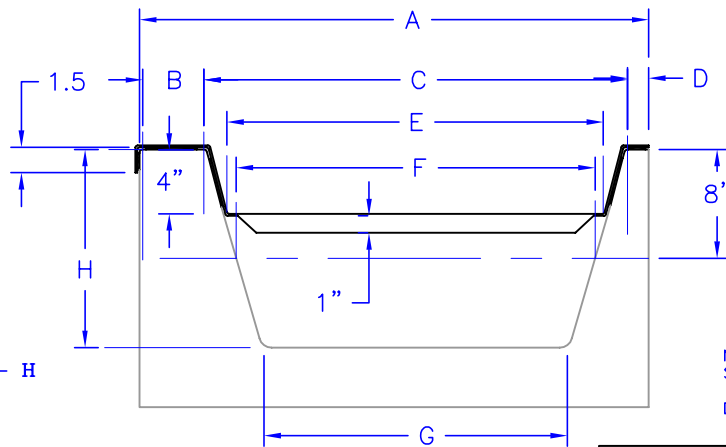




# Technical Data

## S-6095-SS

### REMOVABLE STAINLESS STEEL TUB SEAT



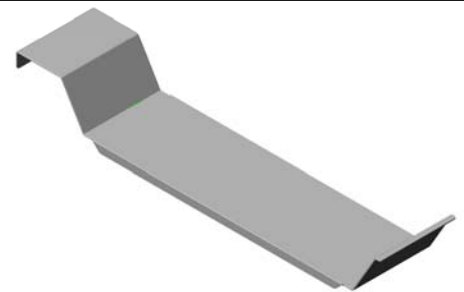
SEAT IS 8" WIDE  
AT TOP AND 8 1/4"  
ACROSS BOTTOM  
AT STIFFENER  
FLANGE

SUPPLY DIMENSIONS A - H  
FOR A PROPER FIT.

A =  
B =  
C =  
D =  
E =  
F =  
G =  
H =

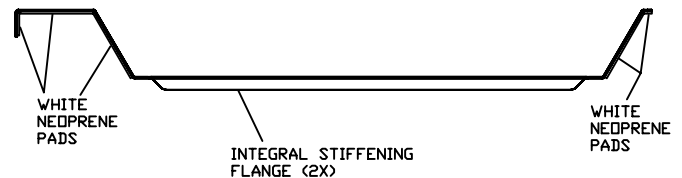
(NOTE: TAKE AT 4" DOWN FROM TOP)  
(NOTE: TAKE AT 8" DOWN FROM TOP)

NOTE: TUB DIMENSIONS MUST BE  
SUPPLIED TO  
OUR FACTORY WHEN  
ORDERING.



#### Construction:

- 11 GA. TYPE 304 STAINLESS STEEL SHEET
- ONE PIECE CONSTRUCTION
- SATIN #4 FINISH
- WHITE NEOPRENE PADS TO PROTECT TUB SURFACE
- 1" INTEGRAL STIFFENING FLANGES (2X)



#### Operation:

- PLACE TUB SEAT ACROSS TUB ENGAGING U-PORTION OF SEAT WITH FRONT (OPEN SIDE) OF TUB AND SHORT FLANGE TOWARDS WALL SIDE OF TUB.
- REMOVE WHEN NOT NEEDED

#### Installation:

- REMOVABLE TUB SEAT (SEE ABOVE)

#### Guide Specification:

- MUST SUPPLY TUB DIMENSIONS AS NOTED IN DWG.
- ONE PIECE TYPE 304 STAINLESS STEEL CONSTRUCTION
- SATIN #4 FINISH
- WHITE NEOPRENE PADS FIXED TO TUB SEAT TO PROTECT TUB SURFACE