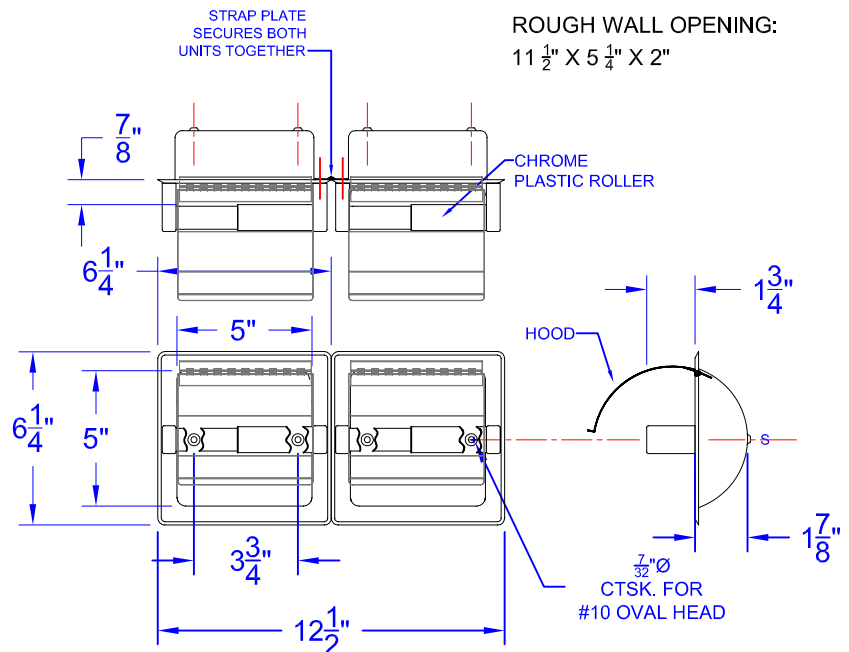
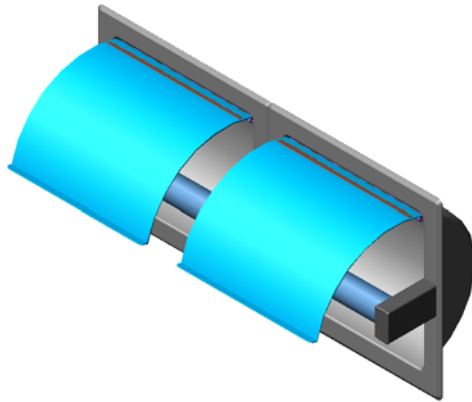




Technical Data

S-2659-01-XX

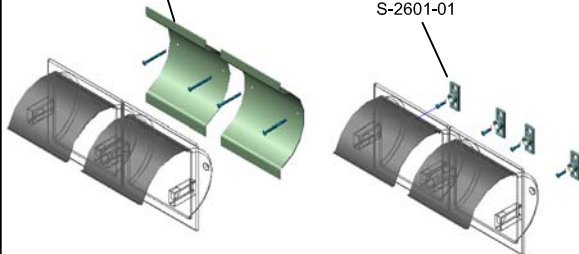
DOUBLE RECESSED TOILET PAPER HOLDER WITH HOOD



MOUNTING SYSTEMS

DRY WALL CLAMP
S-2609-01

TILE TYPE LUGS
S-2601-01



OPTIONAL MOUNTING SYSTEMS COME WITH APPROPRIATE SCREWS.

FINISH CODE: -XX

-SS = SATIN

-BS = BRIGHT

-PC = POWDER COATED (SPECIFY COLOR)

Construction:

SHELLS (2): 22 GAUGE TYPE 304 STAINLESS STEEL FORMED ONE PIECE WITH BEVELED EDGES. (2) $7 \frac{7}{32}'' \varnothing$ MTG. HOLES CTSK. FOR A #10 OVAL HEAD SCREW. SHELLS ARE FASTENED TOGETHER SIDE BY SIDE WITH A 22 GA. GALVANIZED STRAP PLATE. HOODS (2): 22 GAUGE 304 STAINLESS STEEL SPOT WELDED TO SHELL WITH S.S. PIANO HINGE. ROLLER POSTS: 22 GAUGE TYPE 304 STAINLESS STEEL FORMED ONE PIECE. FASTEN TO SHELL FROM BEHIND. ROLLER: CHROME PLATED PLASTIC. SPRING LOADED FOR REMOVAL AND RELOAD. SCREWS: COMES WITH (2) #10 X 1" OVAL PHILIPS STAINLESS STEEL SMS.

Operation:

HOLDS TWO SINGLE ROLLS OF TOILET TISSUE PAPER OF STANDARD SIZE IN A HORIZONTAL POSITION. ROLLER ALLOWS FOR QUICK LOADING OF TOILET TISSUE PAPER,

Installation:

ROUGH WALL OPENING OF $11 \frac{1}{2}'' \times 5 \frac{1}{4}'' \times 2''$ DEEP REQUIRED. USE SHELL TO MARK LOCATION. CUT OPENING THROUGH WALL. FASTEN TO WALL USING SCREWS PROVIDED OR OPTIONAL MOUNTING SYSTEMS SHOWN ABOVE.

CAUTION: RECESSED SHELL REQUIRES NO OBSTRUCTIONS BEHIND WALL. UNIT IS ONLY AS STRONG AS THE ANCHORING DEVICES AND THE WALL ON WHICH IT IS MOUNTED TO.

Guide Specification:

DOUBLE TOILET TISSUE PAPER HOLDER WITH HOOD. RECESSED MOUNTING. FABRICATED FROM TYPE 304 STAINLESS STEEL IN FINISHES REQ. (AS LISTED ABOVE) SPRING LOADED CHROME PLASTIC ROLLER TO HOLD A SINGLE TOILET TISSUE ROLL IN EACH SHELL. ROUGH WALL OPENING REQUIRED IS $11 \frac{1}{2}'' \times 5 \frac{1}{4}'' \times 2''$ DEEP.